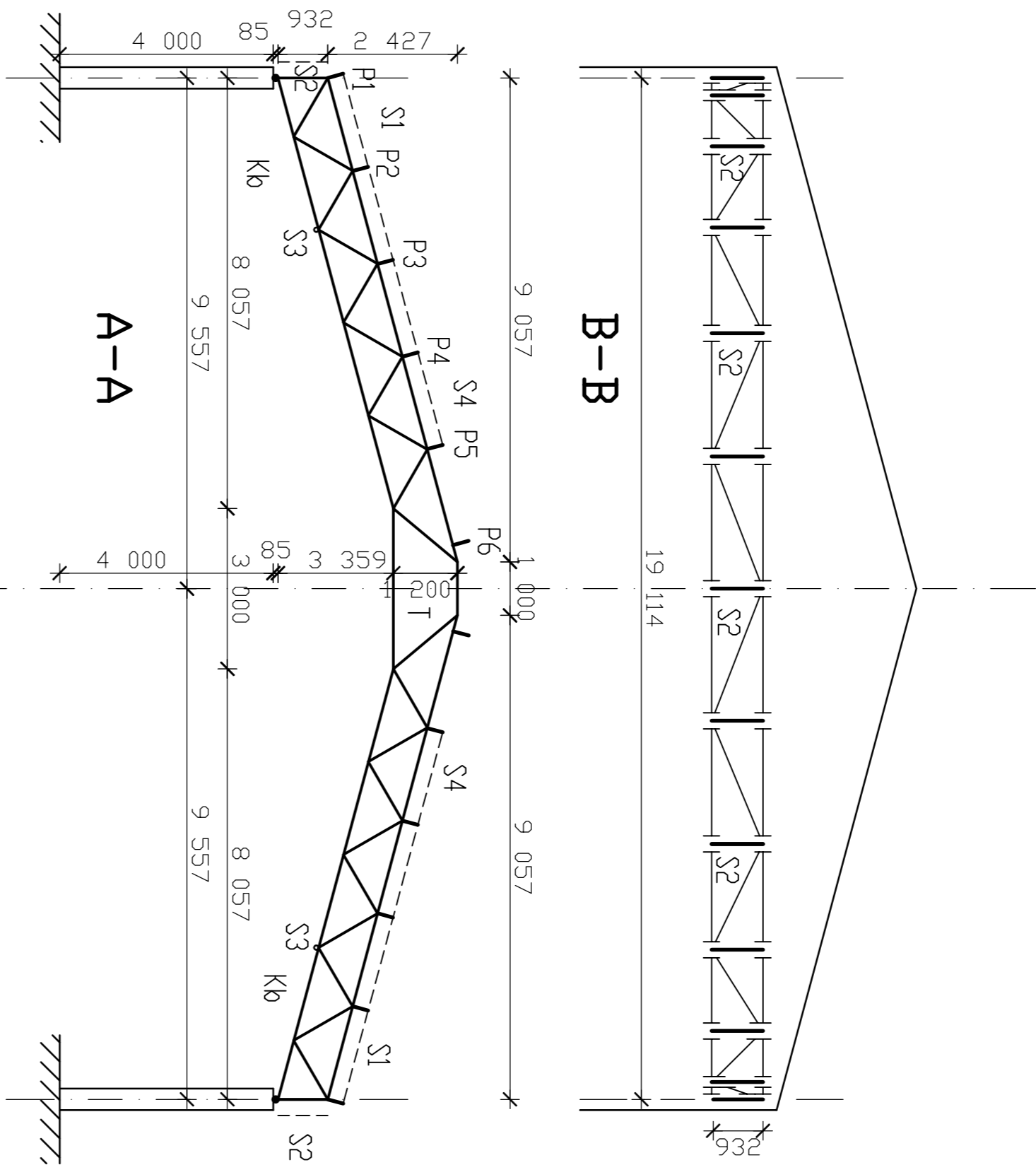


ROOF TRUSS

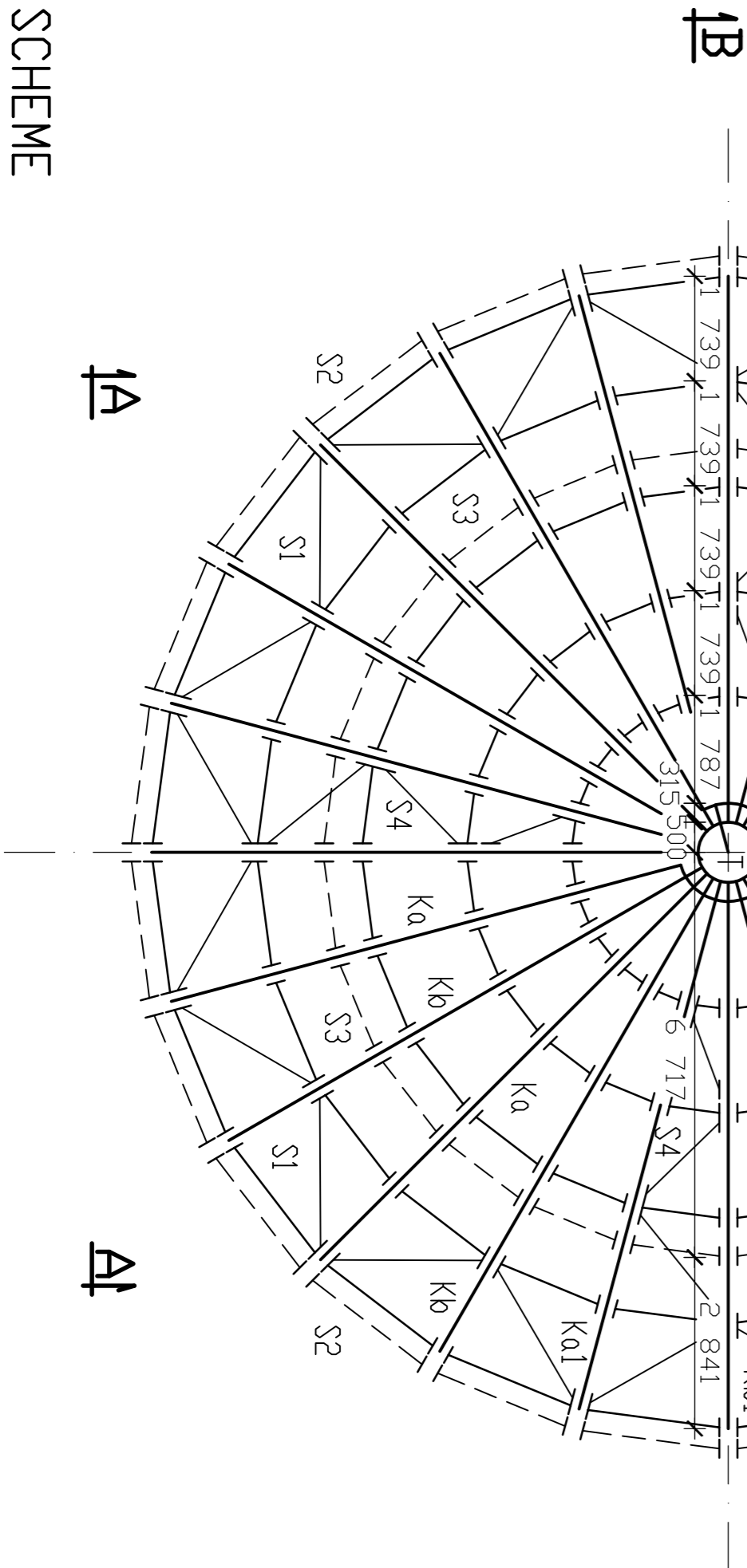


SCHEME

1:100

1A

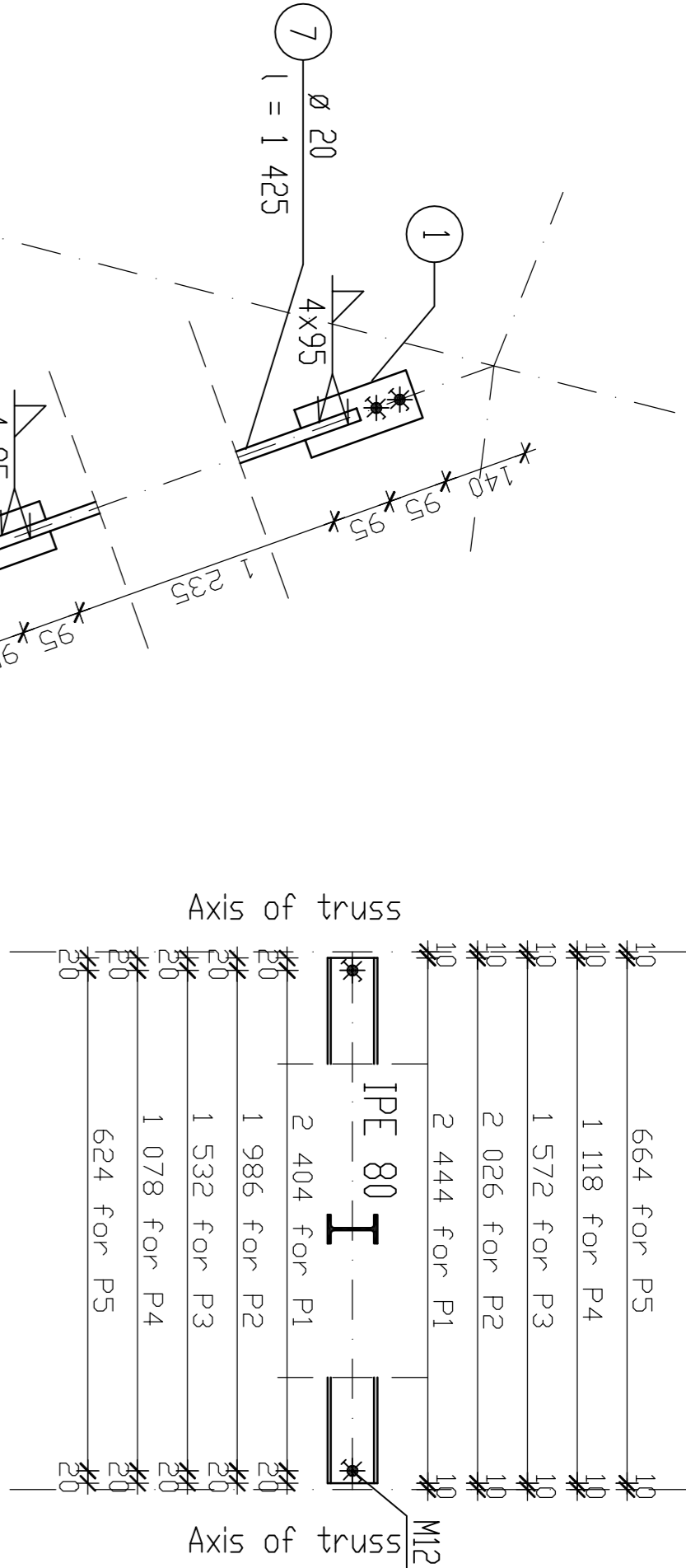
1A



1B

1B

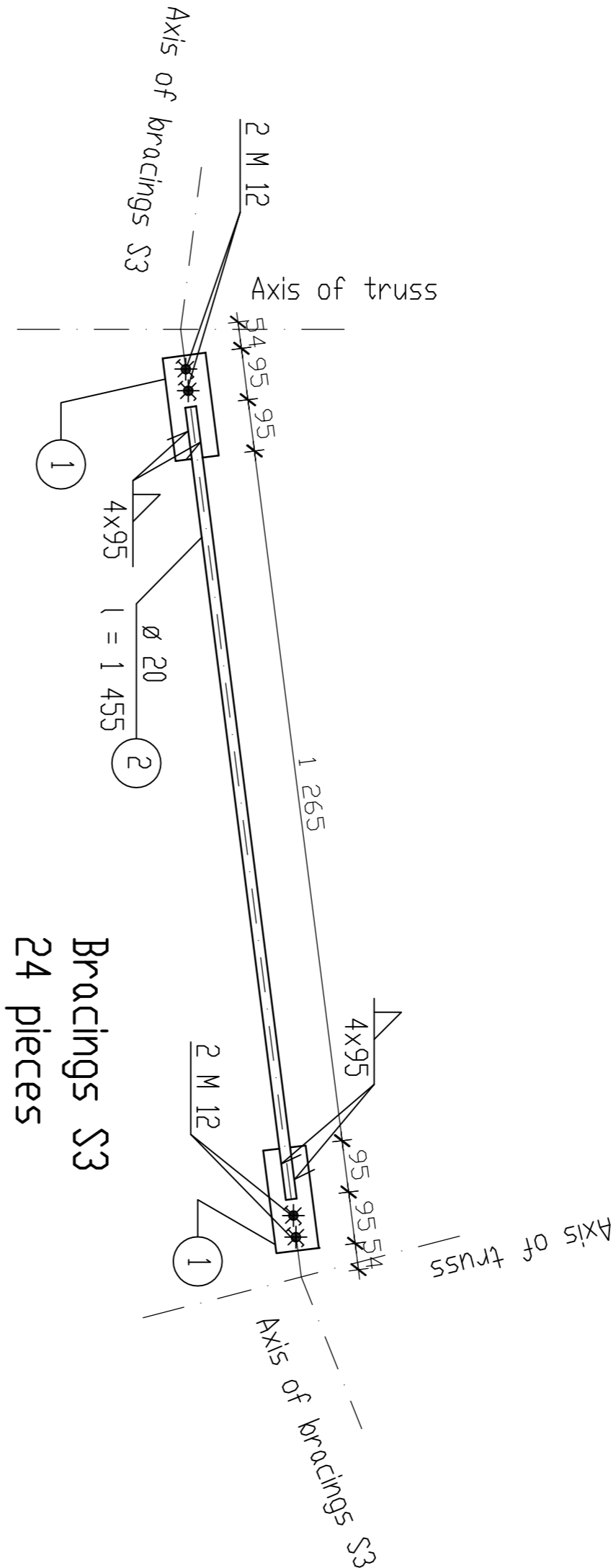
- S1 - peripheral bracing of top chord
- S2 - vertical peripheral bracing
- S3 - peripheral bracing of bottom chord
- S4 - radial bracing
- Ka, Kb - trusses placed alternating
- Ka1, Kb1 - truss next to bracing S4
- P1 ÷ P6 - purlins
- T - central ring



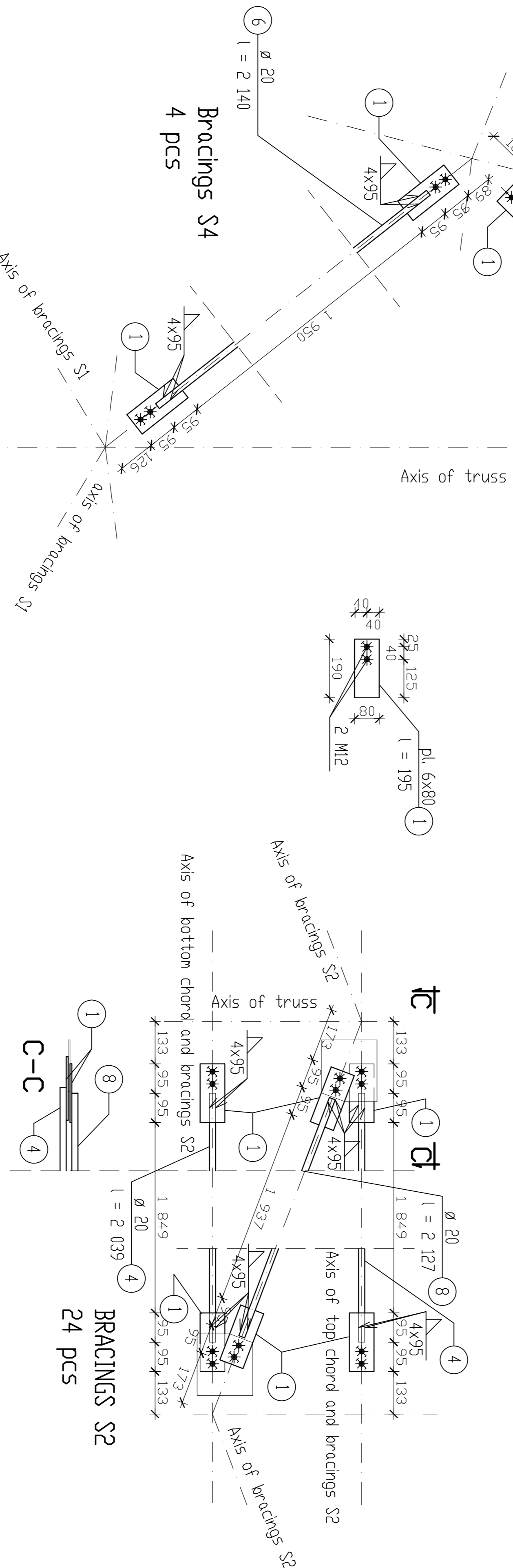
- Purlin P1 24 pcs
- Purlin P2 24 pcs
- Purlin P3 24 pcs
- Purlin P4 24 pcs
- Purlin P5 24 pcs
- Purlin P6 according to drw. 3

PURLINS

1:10

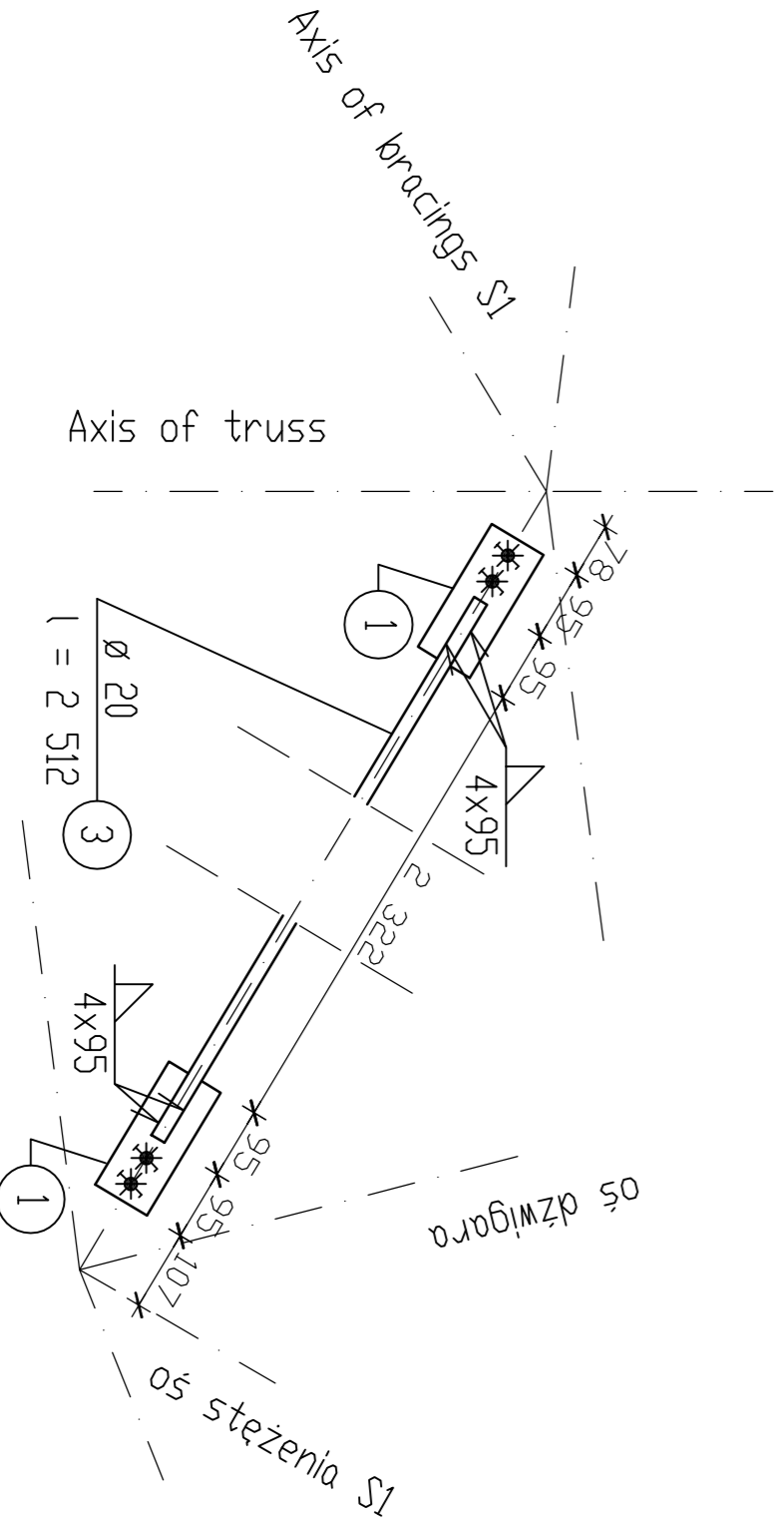


- Bracings S3
- 24 pieces



BRACINGS

1:10



- Bracings S1
- 24 pcs

- Steel S235
- \* Bolts M12, cl 4.8
- Elektroddles E4303

CRACOV UNIVERSITY OF TECHNOLOGY - CIVIL ENGINEERING FACULTY			
Institute of Structure and Building Materials			
Chair of Metal Structures			
Executor	Tomasz Michalowski Ph.D.	group sign.	date
Verifier	Prof. Andrzej Maciejowski		
NOTICES analysed together with drw. 2, 3, 4			Scale
TIP10			# draw 1